



PermaCem Universal.

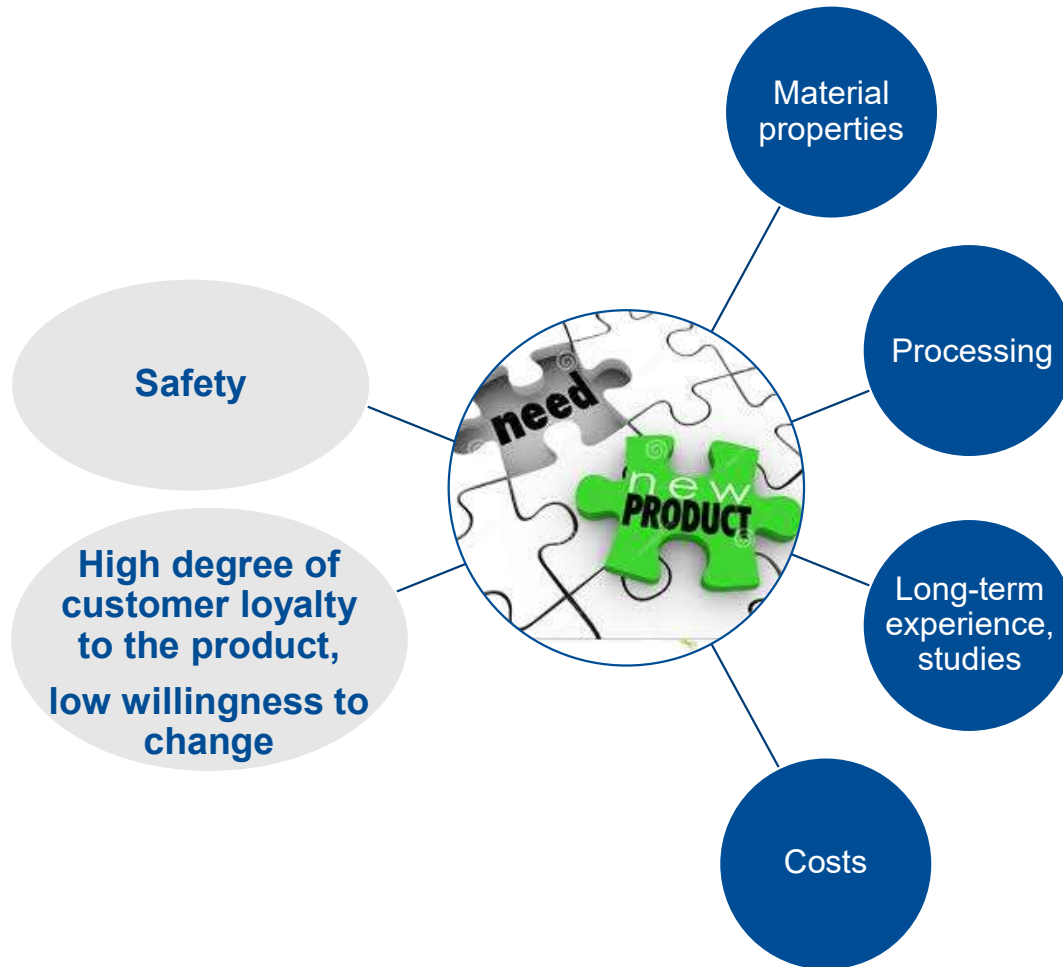
02/2023

↗ Product presentation



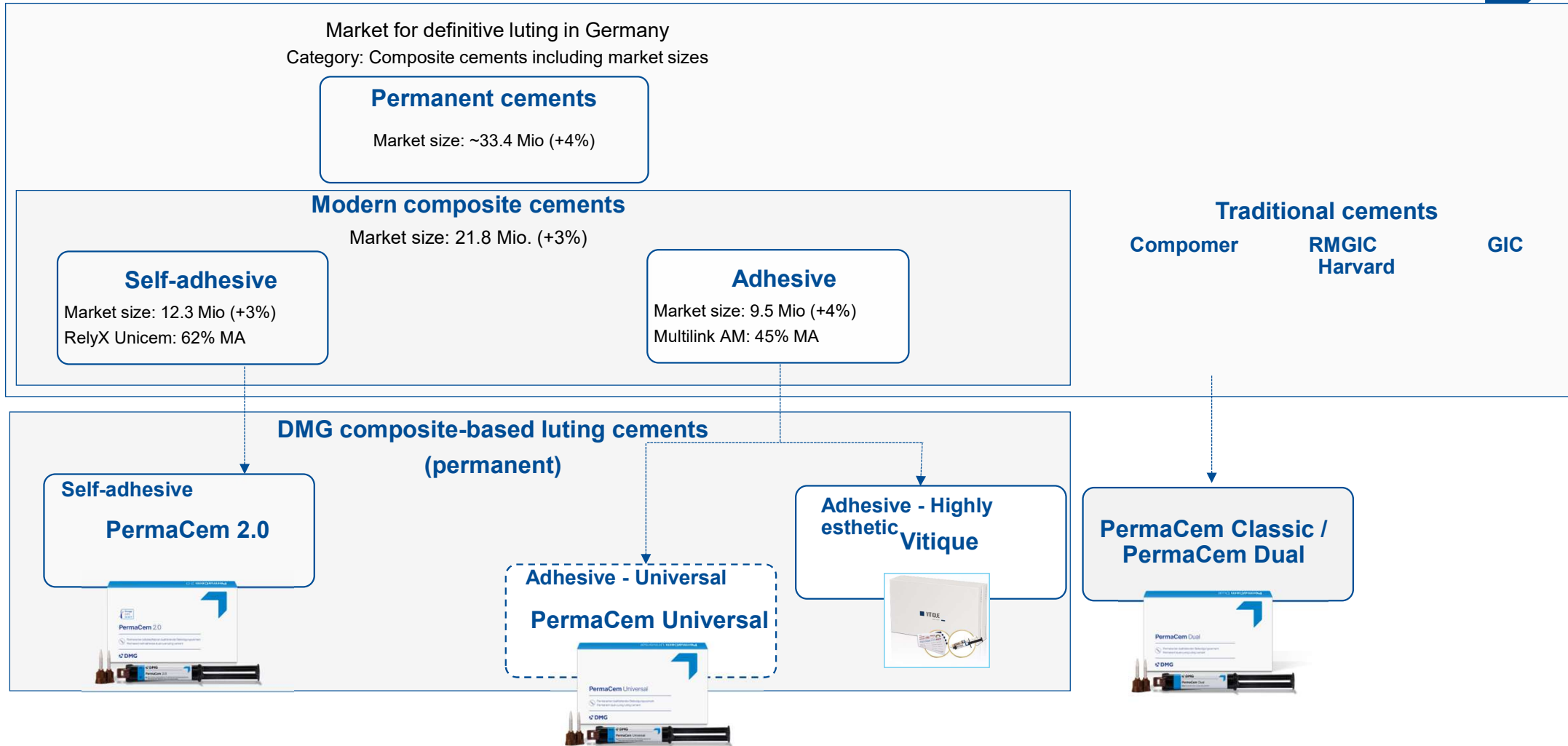


The cement is the key to a successful restoration.



✓ Universal requirements determine the success.

Modern, universal composite cements essential for successful, definitive prosthetic restorations.



PermaCem Universal

Universal brilliance.



- ✓ Universally applicable, dual-curing, adhesive composite luting cement for the permanent cementation of indirect restorations and root posts.
- ✓ The radiopaque material is used together with a suitable bonding agent.

Universal brilliance.
PermaCem Universal.

PermaCem Universal

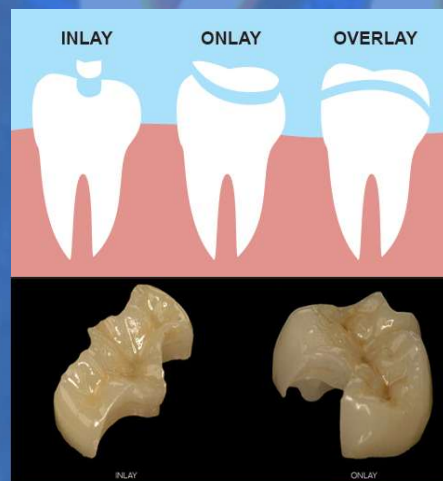
Universal luting for all indications.



✓ Crowns, bridges



✓ Inlays, onlays



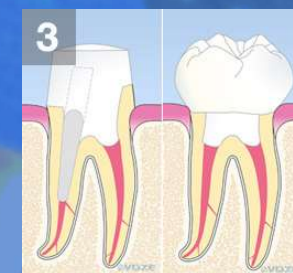
✓ Veneers



✓ Implant abutments



✓ Root post



PermaCem Universal

Suitable for all substances in restorations.



- ✓ Metals (base metals, noble metals)



Sand blasting +
metal primer

- ✓ Oxide ceramics (zirconium dioxide and aluminum oxide)



Sand blasting +
ceramic primer

- ✓ Silicate ceramics (lithium disilicate, leucite or feldspar ceramics)



Hydrofluoric (HF) acid
etching + silane primer

- ✓ Composites / and blocks



Sand blasting +
Primer

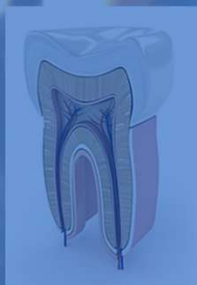
PermaCem Universal

Suitable for all substances in teeth.



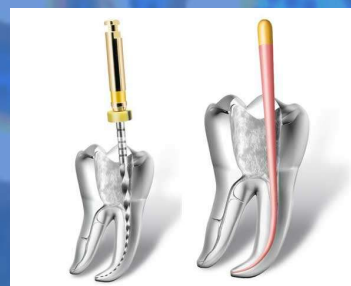
✓ Enamel, dentin

➤ Irrespective of the retention area on the preparation



Adhesive +
Cement

✓ Root canal



Adhesive +
Cement

PermaCem Universal

Easy and comfortable procedure.



- ✓ High abrasion resistance for reliably good marginal quality and longevity of the restoration
- ✓ Simple, stress-free removal of excess cement in one step
- ✓ Storage at room temperature!



PermaCem Universal

A secure fit that looks good.



A1 A2.5 TR



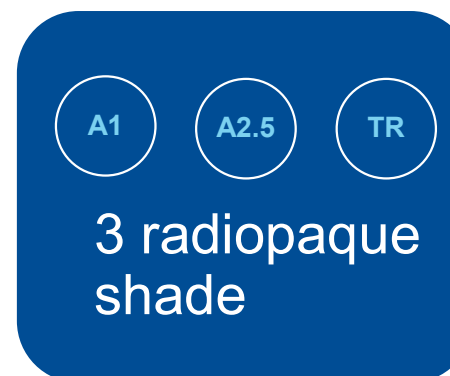
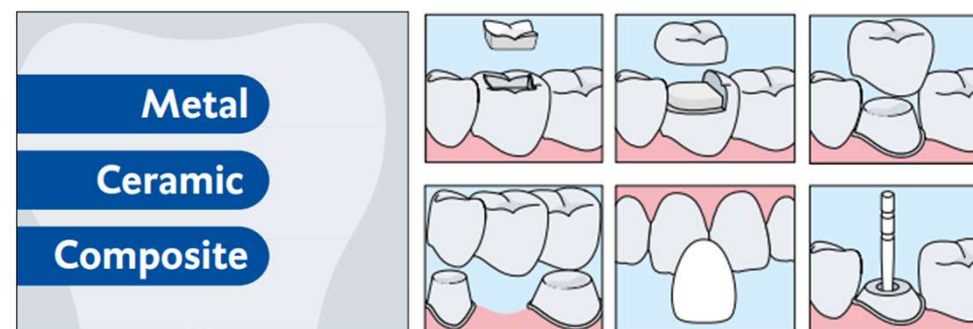
- ✓ Radio-opaque
- ✓ High shade stability
- ✓ Optimum fluorescence for natural-looking esthetics
- ✓ Compatible with Vitique Try-In Pastes



PermaCem Universal – One for all

Key Attributes of PermaCem Universal

- Functions as a versatile **universal** adhesive
- Delivers robust bonding for **indirect restorations**
- Compatible with **ceramics, metals, alloys, and composite materials**
- Exhibits **excellent abrasion** resistance
- Maintains **dependable marginal seal**
- Enhances the **durability** of restorations
- **Reduces water uptake** to preserve aesthetic quality



Universal competitors.



 <p>Multilink Automix (Ivoclar)</p>	<p>Dual-curing Transparent, Yellow and Opaque <u>With Self-Etch Primer</u></p>	<p>1x 9g Automix-syringe, 15x Mixing-Tips</p>
 <p>Rely X Ultimate (3M)</p>	<p>Dual-curing A1 (Light yellow), A3 Opaque (Yellow-opaque), B0.5 (White), Translucent, White-opaque <u>With Total-Etch</u></p>	<p>Refill: 1x 8.5 g Automix-syringe, 10x Mixing-Tips standard, 5x Mixing-Tips wide + Intraoral-Tip attachments Kit with bonding agent</p>
 <p>Panavia V5 (Kuraray)</p>	<p>Dual-curing: Universal (A2), Clear, Brown (A4), White; Self-curing: Opaque <u>With Self-Etch Primer</u></p>	<p>1x 4.5 ml Automix syringe, 20x Mixing-Tips</p>
 <p>G-Cem Linkforce (G-C)</p>	<p>Dual-curing Translucent, A2, Opaque, Bleach <u>With Total-Etch</u></p>	<p>1x 4 ml / 6 g double-barreled syringe, 12 Mixing-Tips</p>

Universal competitors.



 <p>Bifix QM (Voco)</p>	<p>Dual-curing: Universal, Transparent, White-opaque <u>With Total-Etch</u></p>	<p>1x 10 g Quick-Mix-syringe, accessories</p> <p>Set with bonding agent</p>
 <p>Estecem II (Tokoyama)</p>	<p>Dual-curing: Universal, Clear, Brown, White-Opaque <u>With Total-Etch</u></p>	<p>Refill: 1 x 9.5 g Automix-Syringe (without Mixing-Tips)</p> <p>Sets with bonding agent</p>
 <p>Calibra Ceram (Dentsply)</p>	<p>Dual-curing: Light, Medium, Translucent, Opaque, Bleach <u>With Total-Etch</u></p>	<p>Refill: 1x 4.5 g Automix-syringe, 10 Mixing-Tips</p> <p>Sets with bonding agent</p>

Secure multi-purpose luting with PermaCem Universal



Package	
1 Smartmix-Syringe @ 9 g, 10 Smartmix-Tips Short	
Shade A1	REF 213401
Shade A2.5	REF 213402
Shade Transparent	REF 213404

Secure multi-purpose luting with **PermaCem Universal.**



PermaCemUniversal
Universal brilliance.

Various indications – one cement

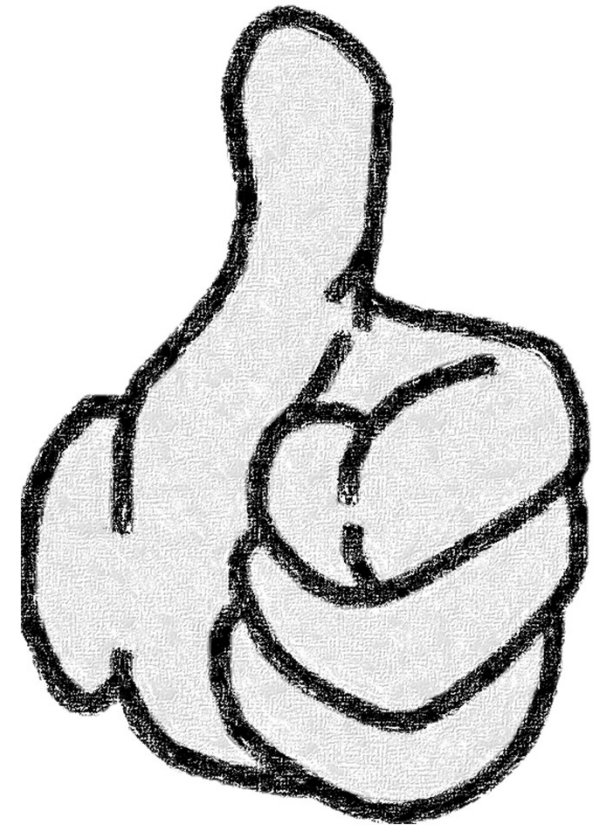
Universal use – versatile with silicate and oxide ceramics, as well as with metals and composites

Strong adhesion across a broad range

High abrasion resistance for reliably good marginal quality and longevity of the restoration

Simple, stress-free removal of excess cement in one step

First-class esthetics in 3 shades with matching try-in pastes



Ideal partners for optimum bonding.



Universal brilliance.

PermaCem Universal



As universal as can be.

LuxaBond Universal



Good reasons.

 PermaCem Universal

LuxaBond Universal

Harmonized system

- ✓ Clear and easy system connections

Simple and safe

- ✓ Familiar working procedures,
- ✓ low risk of error

Universal concept

- ✓ Universal concept for a broad indication range

Very good bonding properties

- ✓ Safe combination with excellent bonding properties for all standard materials, regardless of the substrate
- ✓ Supported by scientific evidence!

Thank you for your attention

